

An aerial photograph of Rotterdam, Netherlands, during a vibrant sunset. The sky is filled with orange and yellow clouds, with the sun low on the horizon. The city skyline is visible, featuring a mix of modern high-rise buildings and traditional European architecture. The foreground shows a dense residential area with multi-story brick buildings. The text "JOIN INTERNATIONAL HEAT ACTION DAY" is overlaid in large, white, bold, sans-serif capital letters across the center of the image.

JOIN INTERNATIONAL HEAT ACTION DAY

ROTTERDAM'S
WEER
WOORD





Josine van den Bogaard
Public Health policy advisor

Esther Wienese
Project leader Rotterdam Heat Plan:
selfcare and care during heatwaves

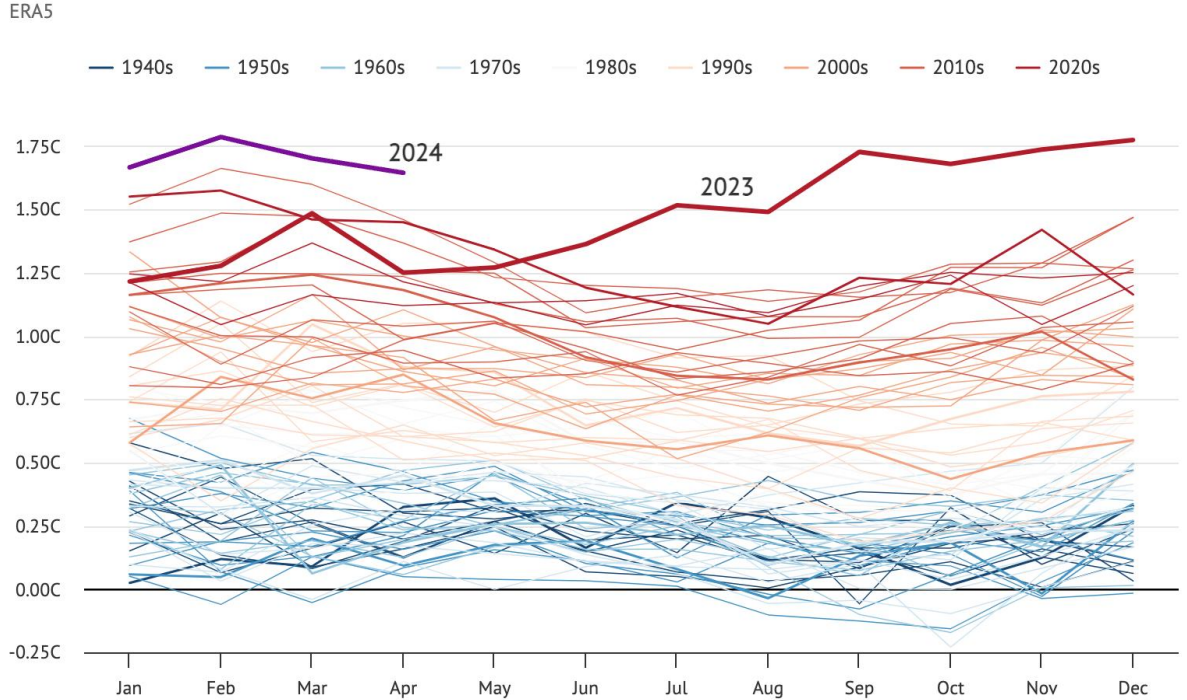
SINCE 2022 YEARLY ON JUNE 2nd



WHY?

AWARENESS

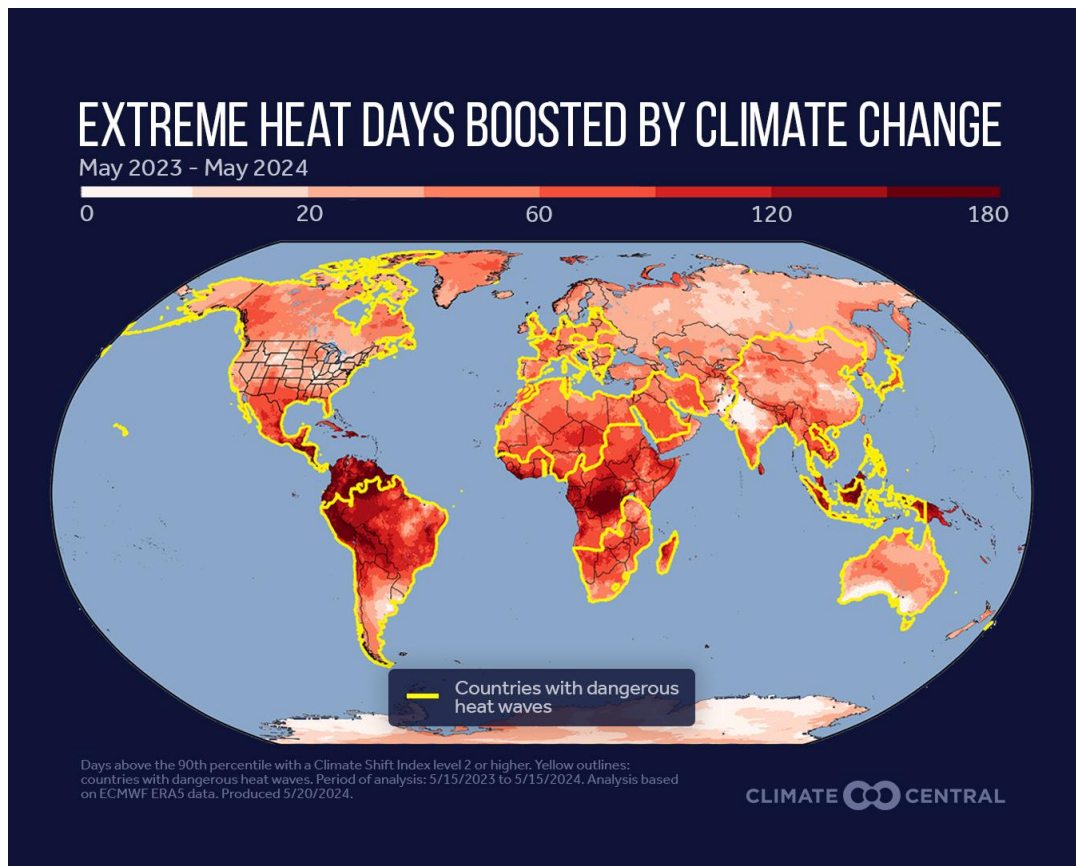
Monthly global average temperatures since June 2023 have set record highs



Source: Copernicus/ECMWF ERA5.

CarbonBrief
CLEAR ON CLIMATE

- Report by World Weather Attribution (incl KNMI), RCRCCC, and Climate Central.
- Last year there were **76 extreme heatwaves** in 90 countries
- Due to climate change all over the world we added an average of **26 days of extreme heat.**



2025 – 4TH EDITION

- Every year more interest
- Almost 200 registrations, including from various Red Cross Red Crescent chapters
- But also: City of London, University of Botswana, USAID, the Asian Development Bank and more.

Collaborating with cities (networks): ICLEI, Making Cities Resilient, Zurich Resilience Alliance, France, Portugal and Scotland.



USAID + C IFRC
Global Summit on
EXTREME HEAT



WHO WE ARE P

'In 2024 we declare extreme heat a priority'

[« Go to news archive](#)



American Red Cross



Climate Centre

AND NOW ALSO ... ROTTERDAM





Temperature

Average temperature rises from 22.1 C to 23.5C in 2050.

Maximum day temperature rises from 36 tot 39 C



Tropical nights

From 7 nights > 20 C to 3 weeks in 2050



Precipitation

Maximum daily total rises to 94 mm in 2050. More days with > 50mm



Drought

Precipitation deficit rises from 230mm to 288mm in 2050

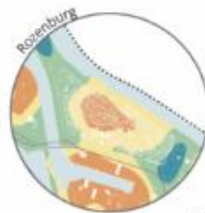
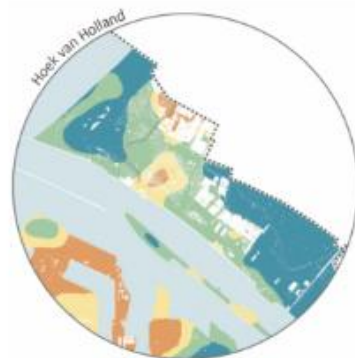


Sea level

Sea level rises with 40cm in 2050 and 100m in 2100.

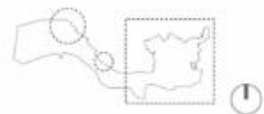
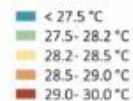


HEAT ISLAND EFFECT AT NIGHT AFTER A HOT SUMMERDAY



Nachttemperatuur op een hete zomerdag

Luchttemperatuur blijft 's nachts
relatief hoog ten opzichte van
landelijk gebied: stedelijk
hitte-eilandeffect



Stedelijk hitte-eiland effect (Beeld: Defacto Stedenbouw, Bron data: Nelen & Schuurmans, hittestress.nu)

CLIMATE ADAPTATION PROGRAM ROTTERDAM



ROTTERDAM HEAT PLAN



ACTIVITIES HEAT ACTION DAY ROTTERDAM



KNOWLEDGE DAY FOR PROFESSIONALS



PARTNER PROGRAM WITH THE CITY



HEAT SQUARE AT THE ROOFTOP FESTIVAL



HEAT RUN IN THE COOL EARLY EVENING





AN ORANGE ERASMUS BRIDGE AT NIGHT

INTERESTED IN JOINING?
contact: Carolina Pereira

pereiramarghidan@climatecent

