



Fondazione Elisabetta Germani

126 YEARS OF CARE AND ASSISTANCE TO THE FRAILTY AND FOR THE TERRITORY



*Dott. Ivan Scaratti – General Director
europanning@fondazionegermani.it*

Cremona - Cingia De Botti (Italy)

Trust us,
We will take care of you





Fondazione Elisabetta Germani

Fondazione Elisabetta Germani is a **multi-service organisation** providing **residential, semi-residential and home services** for elderly and people with disabilities.



125 years of care and assistance for frail people

355 people taken care of between the Health Residence and the Alzheimer's centre

280 employees and 20 collaborators

119 geriatric consultations

100 patients in intermediate care

4337 physiotherapy services

6657 home interventions and 150 family in charge

1866 hours of professional training

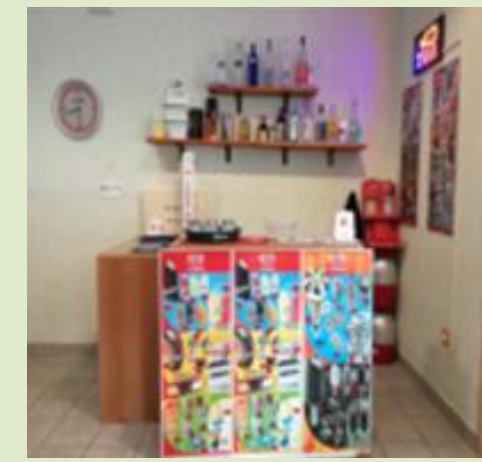




Fondazione Elisabetta Germani

RESIDENTIAL SERVICES

- ✿ **Alzheimer's Centre** – 34 beds dedicated to people with neurocognitive and behavioural disorders.
- ✿ **Nursing Home** – 256 beds for non-self-sufficient elderly requiring full-time nursing and rehabilitation.
- ✿ **Intermediate Care** – 20 beds for transition care between hospital and home.
- ✿ **Private Care** – 16 beds for temporary admission for recovery, stabilization or respite.
- ✿ **Centre for People with Disabilities** – 40 beds for adults under 65 with physical, mental or sensory disabilities.



Dott. Ivan Scaratti – General Director
europanning@fondazionegermani.it

Cremona - Cingia De Botti (Italy)

Trust us,
We will take care of you





Fondazione Elisabetta Germani

SEMI-RESIDENTIAL AND HOME SERVICES

- ✿ **Day-Care Centre “SerenaMENTE”** – 40 daytime places for people over 65 with cognitive or psycho-behavioural frailties.
- ✿ **6700 home interventions/year** for physiotherapy, nursing care, specialist medical support and global care for frail individuals.



OUTPATIENT SERVICES

Psychiatry
Occupational Therapy
Neurosurgery
Cardiology
Speech Therapy
Pneumology
Geriatrics
Psychology
Orthopaedics-Physiatry
Rehabilitation



Dott. Ivan Scaratti – General Director
eurolplanning@fondazionegermani.it

Cremona - Cingia De Botti (Italy)

Trust us,
We will take care of you

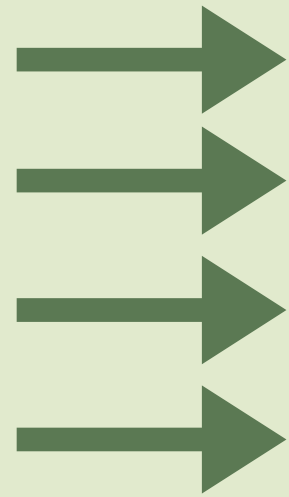




Fondazione Elisabetta Germani

DISABILITY

40 residents under
supervision



RECOVERY

SOCIAL INCLUSION

AUTONOMY AND INDEPENDENT LIFE

EMPOWERMENT AND SOCIAL PARTICIPATION



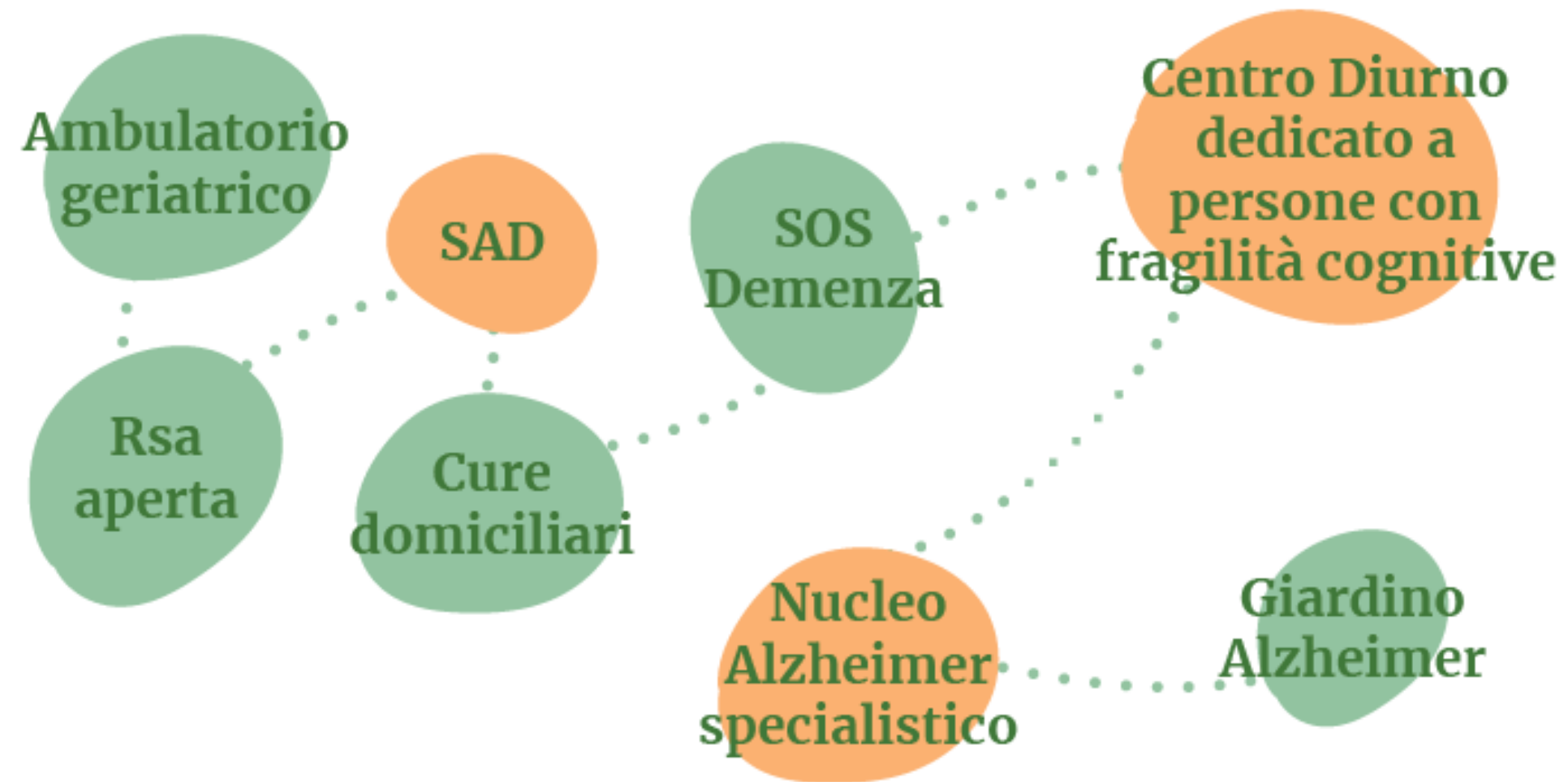
Foundation Congresses on the theme of disability

June 20, 2024: “*Artificial and social intelligence for the innovation of residential services for people with disabilities*”

December 3, 2025: “*Health promotion in intellectual and relational disability*”



THE DEMENTIA PATHWAY



18 | Cronaca del **Casalasco**

MARTEDÌ
5 LUGLIO 2022 **La Provincia**

At Germani: Task Force against Cognitive Disorders

Cingia de' Botti, balzo dei casi e l'istituto si attrezza riconvertendo il centro diurno
«La malattia si modifica e occorre essere pronti ad adeguarsi alle nuove necessità»

IN BREVE

TORRE DE' PICENARDI
LAVORI FOGNARI
DISAGI AL TRAFFICO
A POZZO BARONZIO

La Provincia ha deciso di sospendere da ieri la circolazione stradale lungo un tratto di strada provinciale 29 Cicognolo - Isola Dovarese nel Comune di Torre de' Picenardi, nell'abitato della frazione Pozzo Baronzio, per permettere l'esecuzione di lavori di posa di



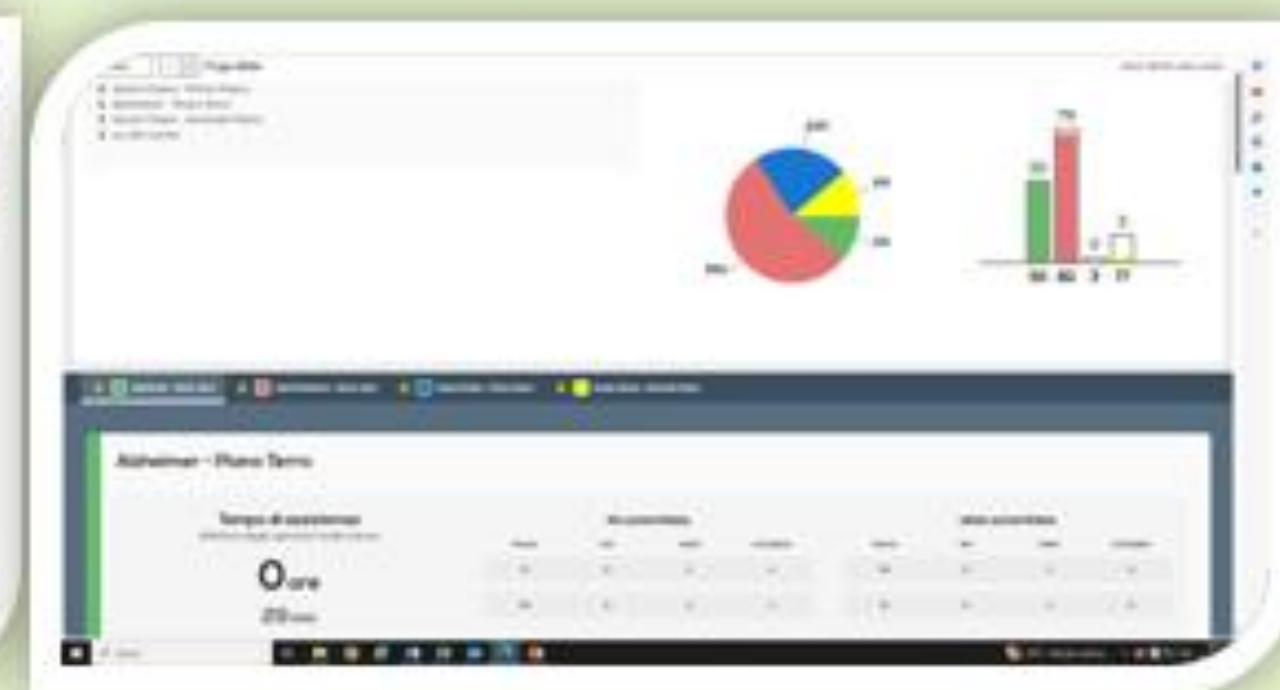
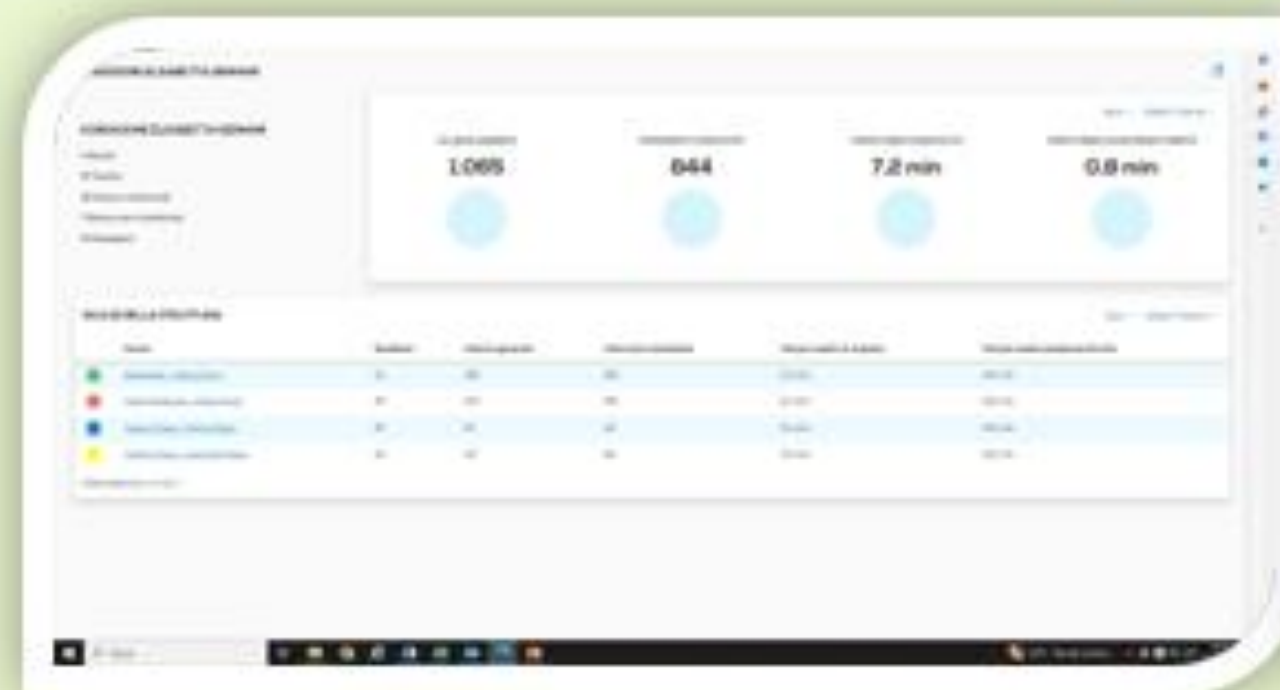


Fondazione Elisabetta Germani

TECHNOLOGICAL INNOVATIONS AND ARTIFICIAL INTELLIGENCE TO SUPPORT OPERATORS, NOT REPLACE THEM

ANCELIA

DIGITIZATION PROCESS



Dott. Ivan Scaratti – General Director
eurolanning@fondazioneitaliani.it

Cremona - Cinzia De Betti (Italy)

Trust us,
We will take care of you





Fondazione Elisabetta Germani

ALZHEIMER'S CONGRESS - OUR ANNUAL APPOINTMENT



XXXII Giornata Mondiale dell'Alzheimer

Ciclo di eventi

15 settembre 2025 | 14 - 18

Ensa older adults, disability working groups and connected activities

Aula Magna, Campus di Cremona
Università Cattolica del Sacro Cuore

14 - 14.15 | Saluti istituzionali
14.15 - 16 | Prima parte
14.15 - 14.45 | Presentazioni delle politiche dell'area anziani, Regioni Lombardia e Regione Veneto
14.45 - 15
Progetto Erasmus Plus "SACRED"
Anthony Polychronakis, Project Coordinator Rotterdam Municipality
15 - 15.15
The STIP Method - Personalized Integrated Stepped Care Method
Judith van Zwienen, Rotterdam University of Applied Sciences
15.15 - 15.30
Inclusive Neighborhood Communities
Otto Trienekens, Veldacademie, City of Rotterdam
15.30 - 15.45
Programma OPSY-INTEgRATED Intervention of pSychoGeriatric Care (INTRINSIC) for dementia and the local unit of the General Hospital of Syros (Grecia)
Apostolos Efkarpidis, Coordinator of OPSY in Syros Hospital, RN, MSc, PhD in Public Health; Mitos Sakellariou, ENSA-Coordinator for Wellbeing and European Network for Social Emotional Learning ENSEL, Chair of Social Cooperative of Cyclades-Altera Vita, Family Therapist, MSc Counseling Psychology

15.45 - 16
Progetto AGE-IT Spoke 5
Licia Boccaletti, Società Cooperativa Sociale A.N.S. (Anzini e non solo) di Carpi
16 - 16.15 | Dibattito
16.15 - 16.45 | Networking Coffè Break
16.45 - 18 | Seconda parte
16.45 - 17.10
Applicazione del modello VBHC (Value Based Healthcare model) per la cura e l'assistenza di persone con demenza in Fondazione E. Germani
Dott.ssa Sara Ceron, Psicologa-EU Project Manager - ISRAA Treviso - Dott.ssa Isabella Salimbeni (Direttore Sanitario) e dott.ssa Enrica Sudati (Coordinatrice di Nucleo) - Fondazione E. Germani
17.10 - 17.30 | Dibattito
17.30 - 18
Le tecnologie a sostegno della cura
Dott. Matteo Mauri, Project Manager Piattaforma Isidora, Cooperativa La Meridiana Monza
Dott. Ivan Scaratti (Direttore Generale Fondazione E. Germani) e Dott. Mario Antonio Cucumo (Coordinatore Area Residenziale, Fondazione E. Germani)
18 | Dibattito e chiusura lavori
18.30 | Networking cocktail

Come partecipare?
Iscrizioni entro il 5 settembre a amalia@fondazionegermani.it
L'iniziativa è organizzata insieme a ENSA e Regione Lombardia. Disponibile la traduzione simultanea.

European Network of Social Authorities
Fondazione Elisabetta Germani
SACRED
ValueCare
Regione Lombardia



On 16 September 2025, the Germani Foundation hosted a European discussion event on dementia and social innovation. The presence of the **Lombardy Region** and the **Veneto Region** with **ENSA** strengthened the institutional value of the meeting. Professionals and realities from different countries brought visions and contributions of great quality.

Dott. Ivan Scaratti – General Director
eurolanning@fondazionegermani.it

Cremona - Cinzia De Botti (Italy)

Trust us,
We will take care of you





Fondazione Elisabetta Germani

ALZHEIMER'S CONGRESS - OUR ANNUAL APPOINTMENT

Our European event was enriched by the presence of professionals and researchers of great value, who brought visions, methods and practices from their international contexts

A discussion that opened up new prospects for collaboration and growth.

The doors are open to those who wish to contribute to the next edition.

Anthony Polychronakis

Rotterdam Municipality – **Erasmus+ SACRED**

Judith van Zwienen

Rotterdam University of Applied Sciences – **STIP Method**

Otto Trienekens

Veldacademie – City of Rotterdam

Apostolos Efkarpidis

General Hospital of Syros

Prof. Antonios Politis

National and Kapodistrian University of Athens

Miltos Sakellariou

ENSA · ENSEL · Altera Vita

*Dott. Ivan Scaratti – General Director
europlanning@fondazionegermani.it*

Cremona - Cingia De Botti (Italy)

Trust us,
We will take care of you





Fondazione Elisabetta Germani

THE FUTURE WE WANT TO BUILD



Associated partner

Supported of

PROCAREFUL



We are here to continue to dialogue with European realities, learn from their experiences and share ours.

We are here to explore the world of European tenders, understand their opportunities and open ourselves up to new growth trajectories.

We are here to build consortia and partnerships, combining skills and visions to design initiatives with real impact.

We are here to grow together, as part of a network that looks to Europe with responsibility and ambition.

This is just the beginning of the journey.

*Dott. Ivan Scaratti – General Director
eurolanning@fondazioneermani.it*

Cremona - Cingia De Botti (Italy)



THEMES OF INTEREST:

DEMENTIA

ACTIVE AGEING

INDIPENDENT LIFE FOR PEOPLE
WITH DISABILITIES

TECNOLOGICAL INNOVATION

SOCIAL HOUSING

ORGANIZATIONAL WELL-BEING

Trust us,
We will take care of you





Fondazione Elisabetta Germani



Dott. Ivan Scaratti – General Director
europanning@fondazioneitaliani.it

Cremona - Cingia De Botti (Italy)



Trust us,
We will take care of you

